

Advantages

- Low cost system ideal for all size moulds
- Epoxy and polyester compatible
- High dimensional stability
- Long-life moulds
- Highly polishable hard-wearing surface
- No special equipment or processing

Uni-Mould™ Advantages

Traditionally, moulds made using polyester resin and gel coat are unsuitable for use as moulds for epoxy-based parts due to well-known release problems when used in this combination. Most polyester moulds also suffer from distortion (pulling), particularly on larger moulds, and cannot be used at elevated temperatures, making them unsuitable for in-mould post-curing.

Uni-Mould is different. It features unique vinylester chemistry which is 100% compatible with epoxy, vinylester, and polyester making it a genuinely universal tooling system. Its specially formulated resin systems are designed to be dimensionally stable up to the Maximum Service Temperature of 90°C and will not pull as they cure, resulting in more dimensionally accurate moulds.

Moulds made using Uni-Mould are highly polishable and, in combination with a chemical release agent (such as Easy-Lease), will result in high-gloss parts straight out of the mould, time after time.

Uni-Mould is designed to be used with low-cost emulsion bound glass chopped strand mat (CSM) reinforcement which breaks down excellently in the resin, just like it would with a polyester resin, meaning that it is an ideal and cost-effective way to create medium to large moulds.

Use with Prepregs

It is not recommended for Uni-Mould moulds to be used with Prepregs. See 'Finished Use' section for further information.

The Uni-Mould™ System

The Uni-Mould system is made up of 3 specially formulated resins, all capable of high operating temperatures and filled for minimal shrinkage:

Uni-Mould Tooling Gel Coat (single or double application)

Uni-Mould Coupling Coat (used with 2 layers of 100g CSM)

Uni-Mould Tooling Resin (used with 4 layers of 450g CSM)

Pattern Compatibility

As with any composite mould making process, but particularly for styrene-based systems, including Uni-Mould, before proceeding with mould lamination it is essential to confirm that your pattern is made from, or coated with, a material that will not adversely affect the release agent, and will not be attacked by the styrene solvent in the gelcoat.

Paint Finished Patterns/Original Parts

It is common to create moulds from existing panels that have been painted but in these situations, extreme caution must be paid to ensure that the gelcoat will release from, and not attack the paint finish.

The main causes of problems with paint-finished parts are:

1. Solvents still leaching from fresh paint/fillers affecting the release agent
2. Styrene in the gelcoat softening vulnerable paints/finishes

Most factory paint finishes will be oven-cured industrial 2k paint and will not be leaching solvents or be attacked by styrene in the gelcoat but fresh paint, 'rattle-can' paints, filler primers and polyester body fillers can all be problematic.

Whilst paints make a tempting option to finish original patterns, or modified/refinished components, rattle-can '1k' paints, or rattle-can 2k paints which have not been oven cured, will almost always result in a release problem or complete release failure.

If the pattern or original part has a paint finish, it is essential to conduct a small test to establish whether you will get a proper release.

A far more reliable alternative to traditional paint is to use our Pattern-Coat Hi-Gloss which is a two-part polyester resin system designed specifically for finishing patterns prior to mould making.

New Composites Patterns

For new composite patterns, the most reliable surface would be our Pattern-Coat Primer or Pattern Coat Hi-Gloss. Both of these coatings will provide both a high quality surface finish and a trouble free release of the mould.

Uni-Mould is known to work with the following pattern/barrier materials:

- Pattern-Coat™ Primer
- Pattern-Coat™ Hi-Gloss
- Oven Cured 2k Paint*
- Polyester/Vinylester/Epoxy Gelcoats
- Sheet Wax
- Polypropylene, Polyethylene, Nylon, Acetal, PTFE and PVC Plastics**
- Glass
- Metals
- Melamine Board

*Conduct a test sample to ensure compatibility.

**Will self-release, release agent is not necessarily required.

Application Guide

This step-by-step application guide assumes that your pattern or master is made from a suitable material (see Pattern Compatibility), is fully cured, sealed and prepared with a suitable release agent.

The guide assumes a mould of 1-2sqm. For larger moulds (up to the size of full boat hulls) the Uni-Mould system is still suitable but special measures need to be undertaken when applying the mould reinforcement. Please contact us for more details.

Uni-Mould Tooling Gel Coat Application



Uni-Mould Tooling Gel Coat should be catalysed at 3% using standard MEKP catalyst. Before application, allow the catalysed gel coat to stand for a few minutes to settle and de-gas.

Gel coat should be applied in two applications. For the first application aim for a consistent thickness around 0.5mm.

Allow the first application to cure for around 4-8hrs (at 20°C room temperature) before applying the second coat of gel coat, again aiming for a thickness of around 0.5mm.

Allow the second gel coat to cure for 4-8hrs (at 20°C room temperature).

Uni-Mould Coupling Coat Application

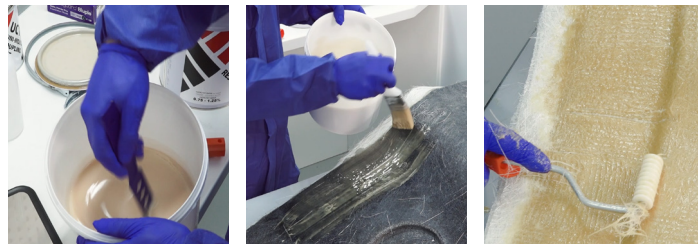


The Uni-Mould Coupling Coat is designed to eliminate print-through of the mould reinforcement, to reduce the risk of blisters underneath the gel coat by ensuring the gel is reinforced with a skin of resin and glass and to provide an ideal substrate for the main reinforcement.

Uni-Mould Coupling Coat should be catalysed with standard MEKP at 1.5 – 2%. Apply a layer of the coupling coat over the mould surface and then add a single layer of 100g CSM. We do not recommend the use of glass surface tissue in lieu of the 100g CSM.

Wet out the CSM thoroughly with the coupling coat resin and ensure that all air is removed from the reinforcement, that it is well wetted through and that the reinforcement is conforming to all the contours of the mould, particularly any tight corners. The amount of coupling coat required is roughly 1-1.4kg/m².

Uni-Mould Tooling Resin Application



The laminating technique for the Uni-Mould Tooling Resin is quite different from conventional polyester laminating resins. It is essential to familiarise yourself with this technique and follow the guidelines carefully in order for the resin to cure properly and result in a successful mould.

Uni-Mould Tooling Resin is cured by its own exotherm and must reach a temperature of 50-60°C during its cure in order to achieve its full properties. In order for this to happen, your workspace environment needs to be between 18°C and 25°C and a minimum of 4 layers of 450gsm or resin-rich (4:1) CSM needs to be laminated onto the back of the mould in a single session.

Preparation

In order to ensure that all the reinforcement can be laid down in a single session it is important to prepare the resin and reinforcement in advance before starting to laminate.

Cut or tare the 450gsm CSM to the right shapes for the mould, allowing for a minimum of 4 layers of mat. Once the mat is cut, it can be weighed to determine the weight of cloth to be used.

Next, weigh out 4 times the weight of the glass in resin (Uni-Mould Tooling Resin should be used at a typical 4:1 ratio of resin to glass) For example, 5kgs of CSM to reinforce your mould will require 20kgs of resin.

Begin Laminating

Catalyse the resin using MEKP catalyst at 0.75 – 1.25% (depending on the ambient temperature) and mix thoroughly.

Working quickly, apply resin all over the mould and then add layers of glass one at a time, wetting with plenty of resin (4:1 by weight) all the layers of glass have been added to the back of the mould. The entire measured quantity of resin should be used to keep the 4:1 ratio.

As the laminate starts to cure, the temperature will rise to 50-60°C and the colour of the laminate will change from a mid brown to a light brown colour.

Allow the resin to cure fully for 24hrs.

Post Curing

For ambient temperature use, a post cure of the mould is recommended, but not required. If you intend to use the mould for higher temperature curing or in-mould post curing of your parts then an elevated temperature post cure is required.

Recommended post-cure for elevated temperature mould use:

10hrs at 60°C > 2hrs at 70°C > 2hrs at 80°C > 2hrs at 90°C

UG1
1st Gelcoat
~0.5mm



~4-8hrs

UG1
2nd Gelcoat
~0.5mm



~4-8hrs

UC1
Coupling Coat
x2 layers 100g CSM



~4-8hrs

UT1
Tooling Resin
x4 layers 450g CSM



24hrs to fully cure

Polishing



Moulds made using Uni-Mould are highly polishable to a full gloss and can easily be restored if they are subject to light scratches using a composites polishing compound (such as Pai Cristal NW1 or TOPFINISH 2).

After polishing, ensure a thorough re-application of release agent before use.

Finished Use

Composite moulds made from the Uni-Mould system can be used for wet-lay, vacuum bagging and resin infusion. Moulds made from Uni-Mould are 100% compatible with epoxy resin, polyester resin and vinylester resin.

Use with Prepregs

We do not recommend Uni-Mould moulds for processing prepregs.

Instead – for prepreg use – better results will be achieved using high temperature epoxy moulds made using the following materials

- EG160 / EMP160 tooling system
- XPREG® XT135 Tooling Prepreg.
- EL160 Resin Infused Carbon Fibre

These high temperature epoxy tooling systems allow the prepreg to be cured at the optimum 120°C which reduces the cure time and improves the mechanical properties of the component. Additionally, epoxy tools have been found to result in a better surface finish with prepregs such as XPREG® XC110.

Release Agent

Because Uni-Mould's tooling gel coat is fully compatible with epoxy, polyester and vinylester, a wide range of release agents (waxes and chemical release agents) should all result in a good release.

Uni-Mould is tested and recommended for use with Easy-Lease Chemical Release Agent which is universally suitable for most resin systems and processes.

Transport and Storage

Resin and hardener should be kept in tightly sealed containers during transport and storage. Both the resin and hardener should be stored in ambient conditions of between 10°C (50°F) and 25°C (77°F).

For storage conditions, please refer back to the specific product, polyester/vinylester resins and gelcoats can have short shelf lives and products should be used within this time. The shelf life for the various resin products are as follows.

UG1 - 3 Months

UC1 - 3 Months

UT1 - 4 Months

Although it may be possible to use the resin after a longer period, a deterioration in the performance will occur.

Pay particular attention to ensuring that containers are kept tightly sealed. Resins will deteriorate quickly when exposed to air.

Disclaimer

This data is not to be used for specifications. Values listed are for typical properties and should not be considered minimum or maximum.

Our technical advice, whether verbal or in writing, is given in good faith but Easy Composites Ltd gives no warranty, express or implied, and all products are sold upon condition that purchasers will make their own tests to determine the quality and suitability of the product for their particular application and circumstances.

Easy Composites Ltd shall be in no way responsible for the proper use and service of the product, nor for the safeguarding of personnel or property, all of which is the duty of the user. Any information or suggestions are without warranty of any kind and purchasers are solely responsible for any loss arising from the use of such information or suggestions. No information or suggestions given by us shall be deemed to be a recommendation to use any product in conflict with any existing patent rights. Before using any of our products, users should familiarise themselves with the relevant technical and safety datasheets provided by Easy Composites Ltd.

Uni Mould is a trademark of Easy Composites Ltd.

Easy Composites Ltd

Unit 39, Park Hall Business Village,
Stoke on Trent, Staffordshire, ST3 5XA
United Kingdom.
Tel. +44 (0)1782 454499
Email sales@easycomposites.co.uk
Web www.easycomposites.co.uk

Easy Composites EU B.V. (EU Customers)

Beneluxbaan 16,
Rijen, 5121 DC
Netherlands
Web www.easycomposites.eu

